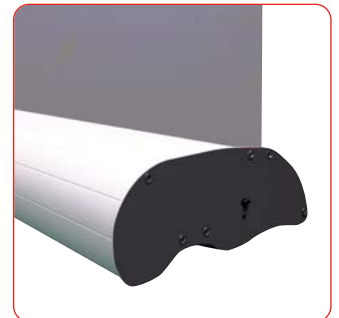
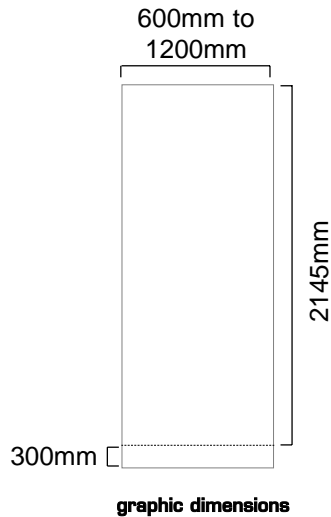


Original Banner 2



features & benefits

- Choice of 4 widths, from 600mm to 1200mm
- Increased internal housing for thicker graphics (up to 450 microns banner vinyl)
- Quick-change graphic release
- Quick-change Twista Plus snap rail
- Available in anodised silver or black powdercoated finish
- Bungee pole



Twista Plus Top Rail



Slide-in Graphic

hardware specifications

800mm Hardware Dimensions (mm):
2245 (h) x 818 (w) x 197 (d) approx.
88.39" (h) x 32.2" (w) x 7.75" (d) approx.

Base Dimensions (mm):
82 (h) x 818 (w) x 197 (d) approx.
3.23" (h) x 32.2" (w) x 7.75" (d) approx.

Weight:
3kg (9.92lbs) approx (including carry bag)

graphic specifications

Visible Graphic Dimensions (mm):
2145 (h) x 600 to 1200 (w)
84.45" (h) x 23.62" to 47.24" (w)

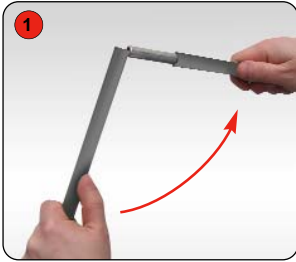
Substrate: Add 300mm (12") to base of graphic to allow for roller mechanism
Reccomended material thickness
225 - 450 microns (8.86 - 17.72 Mills)

additional info

Included in kit:
Base, top rail, bungee pole and carry bag

Assembly Instructions

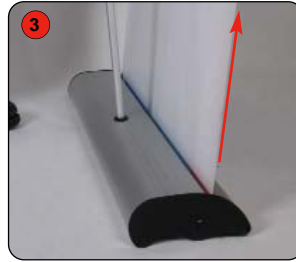
Banner stand assembly



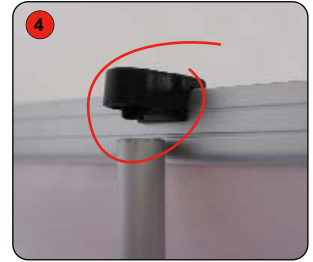
Open up the bungee pole until all 3 parts are fitted securely together.



Slot the pole into the hole on the base and push down to secure fit.



Pull graphic out of unit and tilt back to reach the top of the pole.



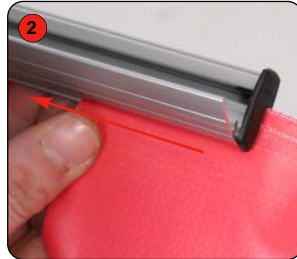
Fit pole into the top rail fixing.

Important: Hold the top rail whilst lowering the banner to prevent damage to the graphic. (do not drop)

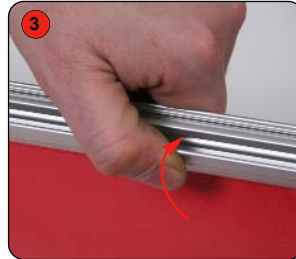
Graphic attachment - Snap Rail



Open up snap rail as shown.

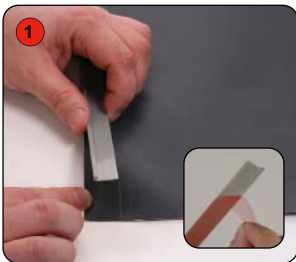


Slide the graphic through the end opening and move down until entire graphic edge is inserted

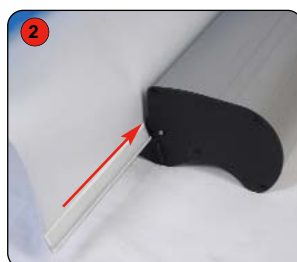


Close rail firmly onto graphic so it is fitted securely.

Graphic attachment - Base



Adhere the insert to the back of the graphic.



Slide the insert and graphic into the base.



Whilst holding the graphic, remove the locking pin from the base and gently allow the graphic to retract.

WARNING: Always attach graphic to base and top rail before removing the locking pin.

After fitting, the graphic should be left for 24 hours before use to ensure the adhesive bonds sufficiently. Opening the cassette may invalidate the product warranty.